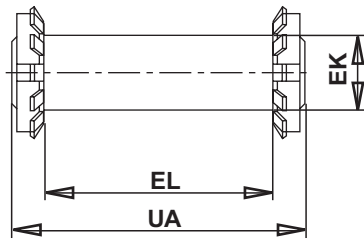
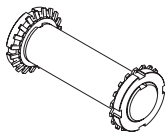




Stud bolt

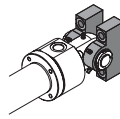


Remarks:

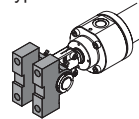
For combination with mounting style MP5 and self-aligning clevis type ZGL - ISO 6982

- 1) = In combination with self-aligning clevis for piston rod end Y (ISO 6020/1)
- 2) = In combination with a self-aligning clevis for piston rod end W (VW standard VW 39 D 920)
- 4) =Weight of pins

Cap attachment MP5



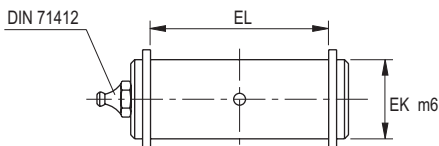
Attachment self aligning clevis type ZGL - ISO 6982



Bore Ø	Rod Ø	Bore Ø	Rod Ø	EL	EK f8/m6	UA	Rated Force	m ⁴⁾	Type
mm				mm			kN	Kg	
25	14/18	25	14 ¹⁾ /18 ²⁾	44	12	55	8	0,10	SB 12
32	18/22	25	18 ¹⁾ /22 ²⁾	56	16	69	12	0,10	SB 16
40	22/28	32	22 ¹⁾ /28 ²⁾	60	20	75	20	0,20	SB 20
50	28/36	40	28 ¹⁾ /36 ²⁾	73	25	90	32	0,40	SB 25
63	36/45	50	36 ¹⁾ /45 ²⁾	92	32	110	50	0,80	SB 32
80	45/56	63	45 ¹⁾ /56 ²⁾	104	40	124	80	1,30	SB 40
100	56/70	80	56 ¹⁾ /70 ²⁾	130	50	154	125	2,50	SB 50
125	70/90	100	70 ¹⁾ /90 ²⁾	163	63	190	200	5,00	SB 63
160	90/110	125	90 ¹⁾ /110 ²⁾	204	80	240	320	10,00	SB 80

Pin KPC

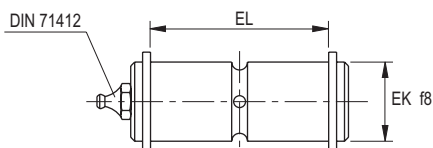
ISO 8132



Pin KPD

ISO 8132

with mid groove



EL H16	EK f8/m6	Rated Force	m ⁴⁾	Type	Type
mm		kN	Kg		
25	10	5	0,01	KPC 10	KPD 10
29	12	8	0,03	KPC 12	KPD 12
37	16	12	0,60	KPC 16	KPD 16
45	20	20	0,13	KPC 20	KPD 20
57	25	32	0,25	KPC 25	KPD 25
72	32	50	0,50	KPC 32	KPD 32
92	40	80	1,00	KPC 40	KPD 40
112	50	125	1,90	KPC 50	KPD 50
142	63	200	3,80	KPC 63	KPD 63
172	80	320	7,60	KPC 80	KPD 80

⁴⁾m = Weight of pins

Pin with retaining rings. The retaining rings are contained in the scope of supply.

These are suitable for the fork clevis VSS, clevis bracket PVA and PVB. These are contained in our Accessories range.

