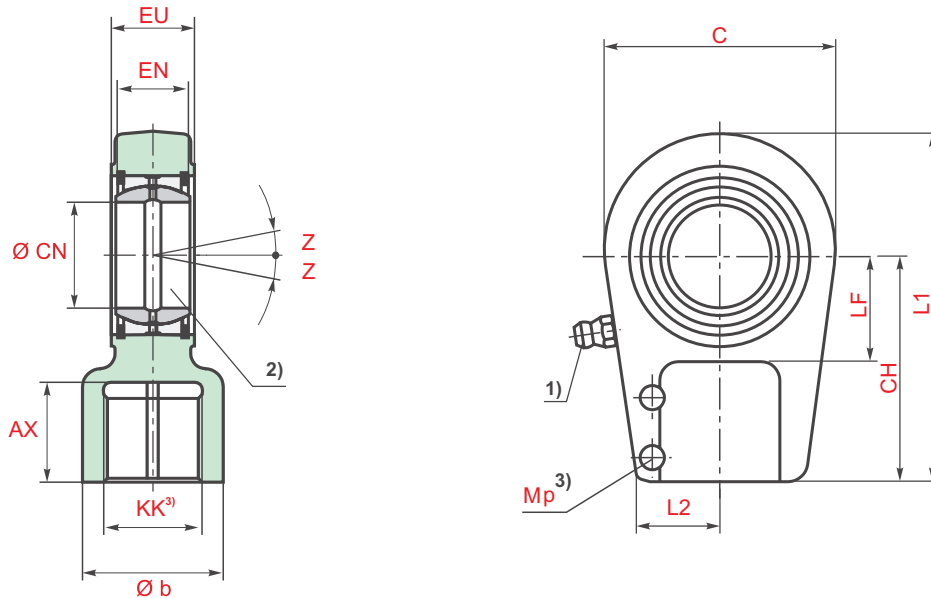


CGAS TAPR...U GAS Self aligning clevis



Piston Ø	Type	AX	b	C	CH	CN	EN	EU -0,4	KK	L1	L2	LF	Mp ³⁾ Nm	Z	m ⁴⁾ kg
40	CGAS 25	30	28	56	65	25 _{-0,010}	20 _{-0,12}	23	M18x2	95	24	25	20	8°	0,65
50	CGAS 30	35	34	64	75	30 _{-0,010}	22 _{-0,12}	28	M24x2	109	28	30	20	7°	1,00
63	CGAS 35	45	44	78	90	35 _{-0,012}	25 _{-0,12}	30	M30x2	132	35	40	40	7°	1,30
80	CGAS 40	55	55	94	105	40 _{-0,012}	28 _{-0,12}	35	M39x3	155	39	45	80	7°	2,40
100	CGAS 50	75	70	116	135	50 _{-0,012}	35 _{-0,12}	40	M50x3	198	45	55	80	7°	4,10
125	CGAS 60	95	87	130	170	60 _{-0,015}	44 _{-0,15}	50	M64x3	240	59	65	160	7°	6,50
140	CGAS 70	110	105	154	195	70 _{-0,015}	49 _{-0,15}	55	M80x3	278	69	75	160	6°	9,50
160	CGAS 80	120	125	176	210	80 _{-0,015}	55 _{-0,15}	60	M90x3	305	84	80	300	6°	16,00
180	CGAS 90	140	150	206	250	90 _{-0,020}	60 _{-0,20}	65	M100x3	363	90	90	300	5°	28,00
200	CGAS 100	150	170	230	275	100 _{-0,020}	70 _{-0,20}	70	M110x4	400	94	105	300	7°	34,00
220	CGAS 110	160	180	264	300	110 _{-0,020}	70 _{-0,20}	80	M120x4	442	105	115	500	6°	44,00
250	CGAS 110	160	180	264	300	110 _{-0,020}	70 _{-0,20}	80	M120x4	442	105	115	500	6°	44,00
280	CGAS 120	190	210	340	360	120 _{-0,020}	85 _{-0,20}	90	M150x4	540	120	140	500	6°	75,00
320	CGAS 140	210	230	380	420	140 _{-0,025}	90 _{-0,25}	110	M160x4	620	128	185	1000	7°	160,00
-	CGAS 160	280	260	480	460	160 _{-0,025}	105 _{-0,20}	110	M180x4	710	145	200	1000	8°	185,00

* Unless otherwise specified, all dimensions are given in millimetres.

Remarks:

- 1) = Grease nipple; cone head form A to DIN 71412
- 2) = Associated pin Ø m6;
associated pin Ø j6 with a maintenance-free self-aligning clevis
- 3) Mp = Tightening moment
The fork clevis must always be screwed against the shoulder of the piston rod.
Then, the clamping screws must be tightened to the specified tightening torque.
- 4) m = Weight of self-aligning clevis