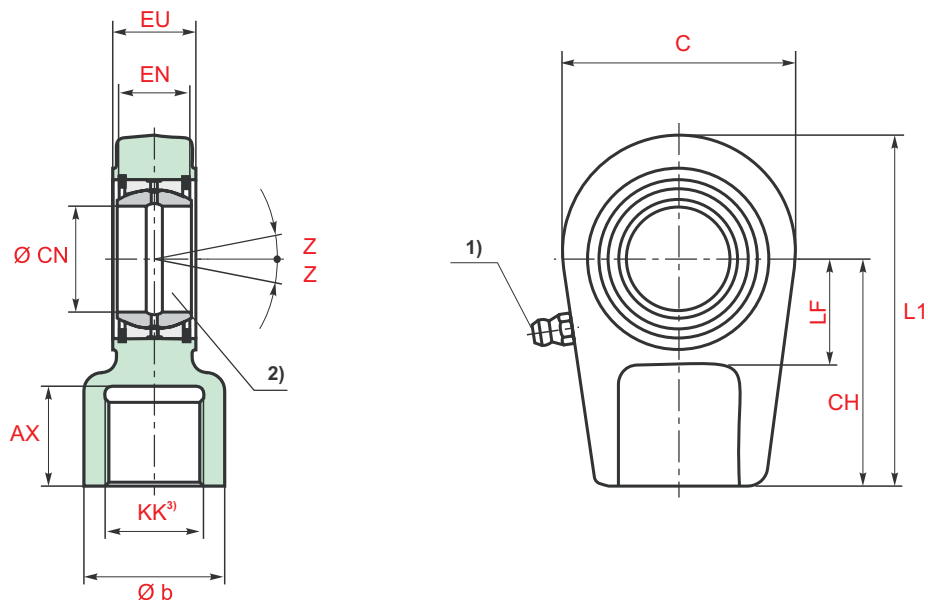


CGA TAPR...N Self aligning clevis



Piston Ø	Type	AX	b	C	CH	CN	EN	EU -0,4	KK	L1	LF	Z	m ⁴⁾ kg
40	CGA 16	17	28	56	50	25 _{-0,010}	20 _{-0,12}	23	M16x1,5	80	25	8°	0,43
50	CGA 22	23	34	64	60	30 _{-0,010}	22 _{-0,12}	28	M22x1,5	94	30	7°	0,70
63	CGA 28	29	44	78	70	35 _{-0,012}	25 _{-0,12}	30	M28x1,5	112	40	7°	1,10
80	CGA 35	36	55	94	85	40 _{-0,012}	28 _{-0,12}	35	M35x1,5	135	45	7°	2,00
100	CGA 45	46	70	116	105	50 _{-0,012}	35 _{-0,12}	40	M45x1,5	168	55	7°	3,30
125	CGA 58	59	87	130	130	60 _{-0,015}	44 _{-0,15}	50	M58x1,5	200	65	7°	5,50
140	CGA 65	66	93	154	150	70 _{-0,015}	49 _{-0,15}	55	M65x1,5	232	75	6°	8,60
160	CGA 80	81	125	176	170	80 _{-0,015}	55 _{-0,15}	60	M80x2	265	80	6°	12,20
180	CGA 100	101	143	206	210	90 _{-0,020}	60 _{-0,20}	65	M100x2	323	90	6°	21,50
200	CGA 110	111	153	230	235	100 _{-0,020}	70 _{-0,20}	70	M110x2	360	105	7°	27,50
220	CGA 120	125	176	265	265	110 _{-0,020}	70 _{-0,20}	80	M120x3	407,5	115	6°	40,70
250	CGA 120	125	176	265	265	110 _{-0,020}	70 _{-0,20}	80	M120x3	407,5	115	6°	40,70
280	CGA 130	135	188	340	310	120 _{-0,020}	85 _{-0,20}	90	M130x3	490	140	6°	76,40

* Unless otherwise specified, all dimensions are given in millimetres.

Remarks:

- 1) = Grease nipple; cone head form A to DIN 71412
- 2) = Associated pin Ø m6;
associated pin Ø j6 with a maintenance-free self-aligning clevis
- 4) m = Weight of self aligning clevis