

PNEUMATIC DRIVE

PD
TYPE

DRIVE DIRECTLY WITH COMPRESSED AIR UP TO 10 BAR.

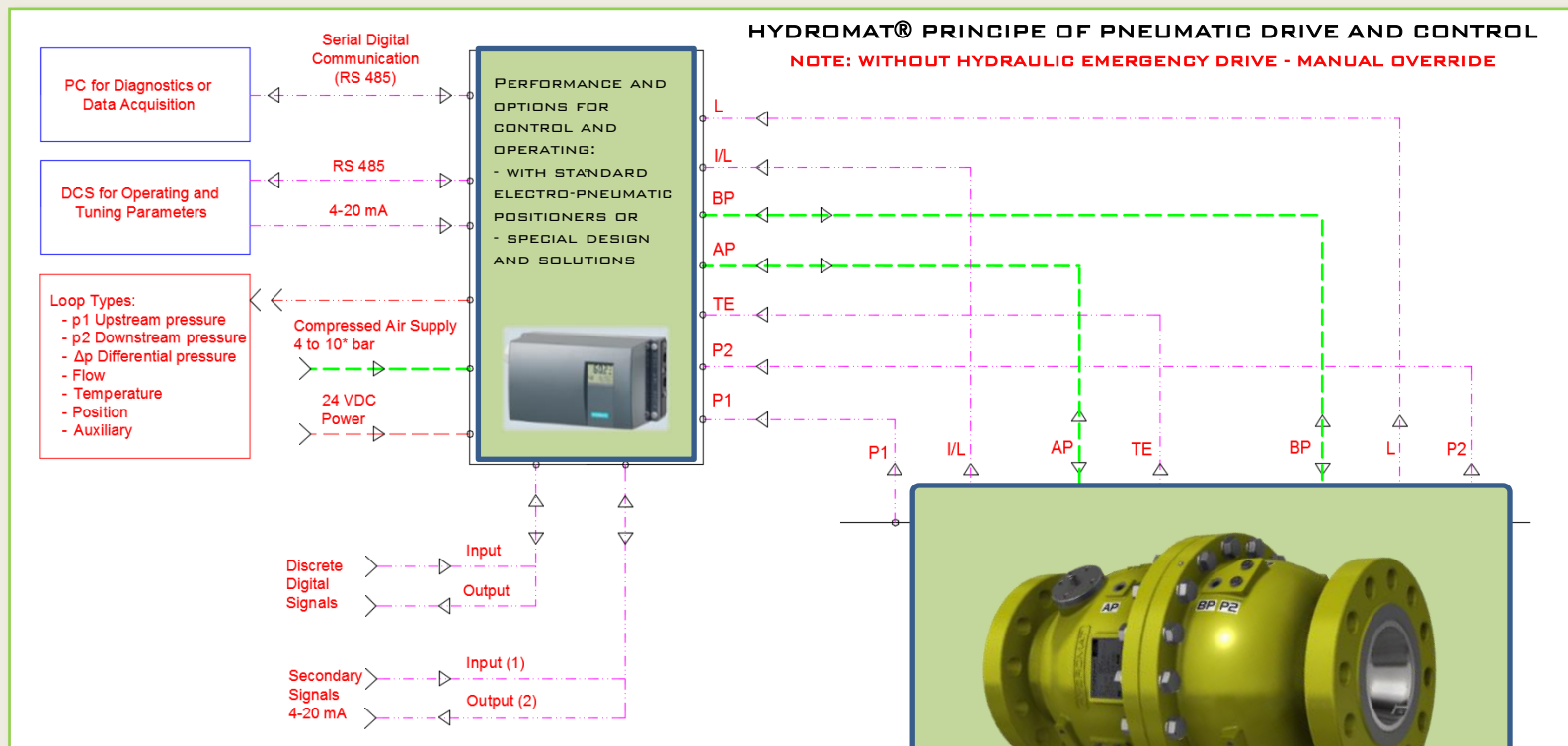
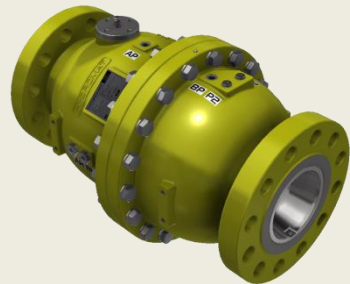
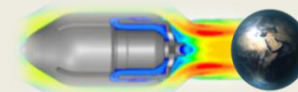
ON REQUEST POSSIBLE EXECUTION FOR DIRECTLY DRIVE WITH NATURAL GAS, CARBON DIOXIDE, NITROGEN OR NOBLE GASES. OTHER OPERATING PRESSURE ON REQUEST.

PD-TYPE OF THE VALVE DRIVE SYSTEM IS SIMPLE AND VERY RELIABLE SOLUTIONS WITHOUT HYDRAULIC EMERGENCY DRIVE.

EQUIPMENT FOR THE MOST STRINGENT ATEX REGULATIONS.

RELIABLE FUNCTION FOR REALIZATION OF THE HIGH INTEGRITY PRESSURE PROTECTION SYSTEMS - HIPPS.

HYDROMAT® WORLD PATENTED MULTI-FUNCTIONAL VALVE SYSTEM



ELECTRO-PNEUMATIC POSITIONERS TO VALVE OPERATING

- THE POSITIONER ENSURES A PREDETERMINED ASSIGNMENT OF THE VALVE POSITION (CONTROLLED VARIABLE X) TO THE INPUT SIGNAL (SET POINT W). IT COMPARES THE INPUT SIGNAL RECEIVED FROM A POSITION CONTROL SYSTEM (FEEDBACK) TO THE TRAVEL OR ROTATIONAL ANGLE OF THE CONTROL VALVE AND ISSUES A CORRESPONDING OUTPUT SIGNAL PRESSURE (OUTPUT VARIABLE Y).

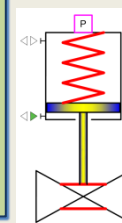
- UNIVERSAL OR INTELLIGENT VALVE POSITIONER (SUPPLY AIR PRESSURE UP TO 10 BAR), LIKE AS SIEMENS OR THE OTHERS MANUFACTURERS AND BRANDS LIKE AS FLOWSERVE, EMERSON, SAMSON, MOKVELD...

- OPERATING WITH COMPRESSED AIR, PURIFIED NATURAL GAS, CARBON DIOXIDE, NITROGEN OR NOBLE GASES.

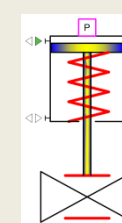
- COMMUNICATION: SET POINT 4-20 MA, HART (SET POINT 4-20 MA), PROFIBUS, FOXCOM DIGITAL...

- AMBIENT TEMPERATURE -40 TO +80 °C.

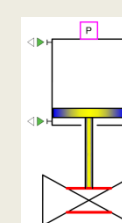
- ELECTRIC CLASSIFICATION: ATEX (II 2 G EEX IA IIC T4/T6), FM/DSA CLASS I. DIV. I, GROUP A, B, C, D



SIMPLIFIED SYMBOL
PD.SA.FTC
FAIL TO CLOSE



SIMPLIFIED SYMBOL
PD.SA.FTO
FAIL TO OPEN



SIMPLIFIED SYMBOL
PD.DA
DOUBLE ACTING