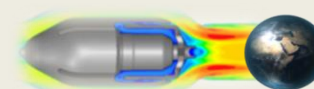


# MECHANICAL DRIVE

FLOW CONTROL AND ON/OFF OPERATIONS

# MD

TYPE



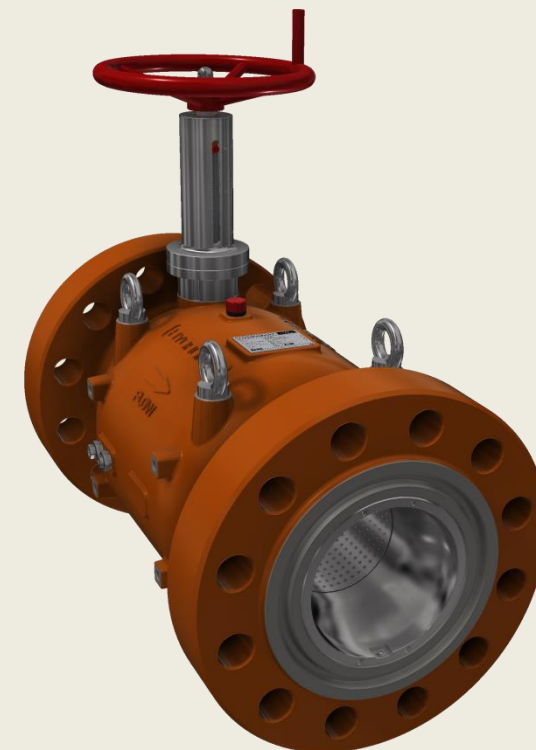
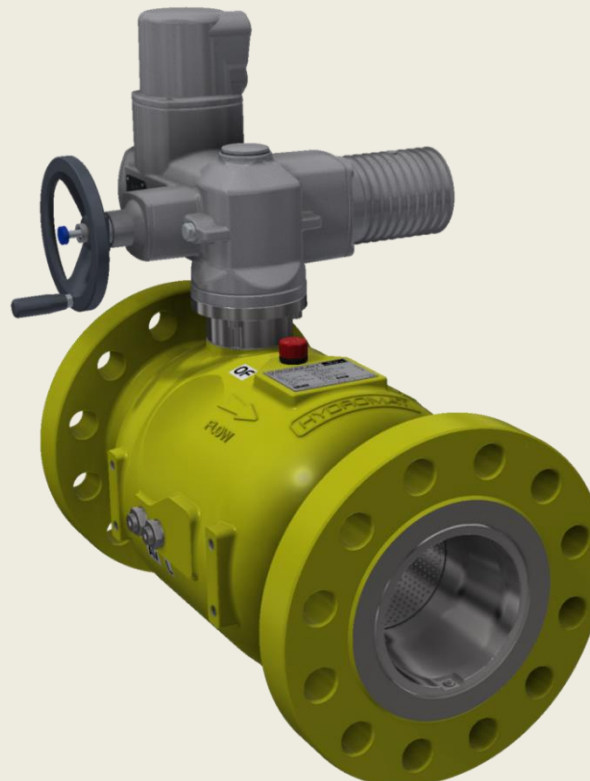
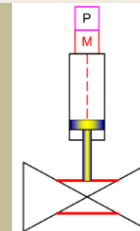
## HYREVAL® DESIGN TYPE MD

- POSSIBLE DESIGN BASED ON MECHANICAL DRIVE:
  - ELECTRO-MOTORS, TYPE **EMD**
  - HYDRO-MOTORS, TYPE **HMD**
  - AIR-MOTORS, TYPE **AMD**
- EMERGENCY OPENING AND CLOSING FOR THE ALL DRIVE TYPES BY HAND WHEEL

## FEEDBACK OF THE POSITION OF VALVE CONTROL PISTON – % VALVE OPENNESS.

DEPEND ON MECHANICAL DRIVE TYPES ON THE VALVE BODY EXTERNAL IS POSSIBLE INSTALLATION OF DIFFERENT TYPE OF ELECTRONIC TRANSMITTERS, SENSORS AND LIMIT SWITCHES.

MD TYPE  
SIMPLIFIED  
SYMBOL



THE MOST COMMONLY USED CONTROL SIGNALS FOR THE VALVE:

- INPUT SIGNAL (SET POINT) 4-20 MA
- OUTPUT SIGNAL (FEEDBACK) 4-20 MA