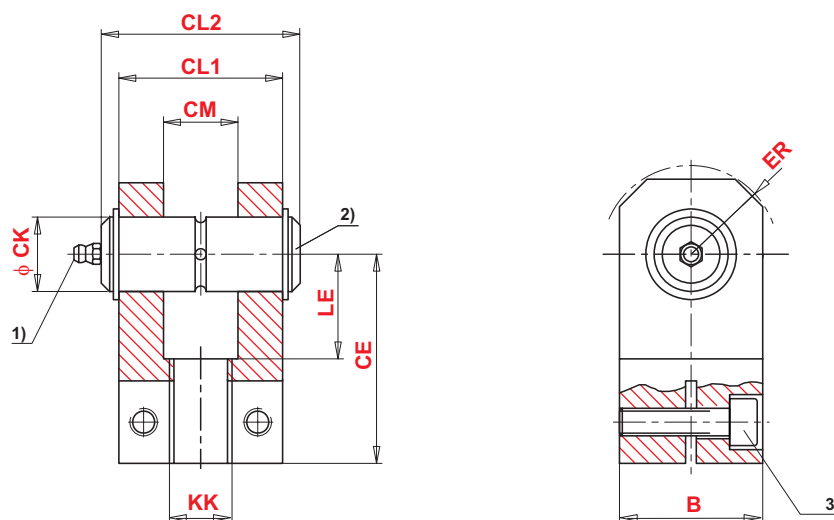
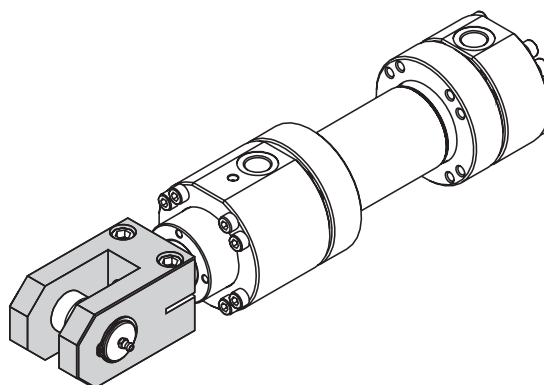


### Fork clevis

ISO 8132



Bore Ø	MM Ø	Type	CK	CE	B	CL1	CL2	CM	ER	KK	LE	Mp <sup>3)</sup>	RATED VALUE		m <sup>4)</sup>	Ordering code
			H9	js12	max	h16	A12	max	(Metric)	min	Nm	kN	Kg			
50	32	VSS 27 H2	32	80	65	70	78	32	40	M27x2	42	57	50	4,7	055000027	
	36															
63	40	VSS 33 H2	40	97	80	90	98	40	50	M33x2	52	99	80	7,8	055000033	
	45															
80	50	VSS 42 H2	50	120	100	110	118	50	63	M42x2	64	99	125	14,1	055000042	
	56															
100	63	VSS 48 H2	63	140	125	140	150	63	71	M48x2	75	157	200	23,4	055000048	
	70															
125	80	VSS 64 H2	80	180	160	170	180	80	90	M64x3	94	240	320	53,1	055000064	
	90															

**Remarks:**

- 1) = Grease nipple; cone head form A to DIN 71412
- 2) = Associated pin Ø r6
- 3) Mp = Tightening moment  
The fork clevis must always be screwed against the shoulder of the piston rod.  
Then, the clamping screws must be tightened to the specified tightening torque.
- 4) m = Weight of fork clevis