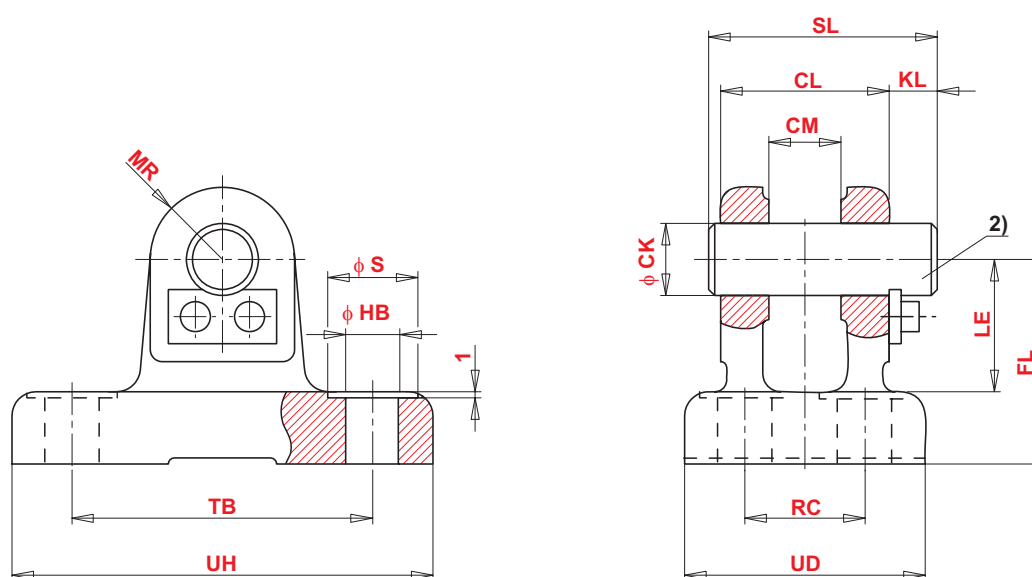


### Prirubna vilica ISO 8132, oblik A



Klip Ø	Tip	CK	CL	CM	FL	HB	KL	LE	MR	RC	S	SL	TB	UD	UH	NOMINALNA SILA	$m^4)$	Narudžbeni kod
		H9	h16	A12	js12	H13		min	max	js14		js14	max	max	kN			
mm		mm																
50	PVA 50 H2	32	70	32	65	17,5	13	43	32	50	26	86	110	85	143	50	2,8	077000050
63	PVA 63 H2	40	90	40	76	22	16	52	40	65	33	109	130	108	170	80	5,0	077000063
80	PVA 80 H2	50	110	50	95	26	19	65	50	80	40	132	170	130	220	125	10,1	077000080
100	PVA 100 H2	63	140	63	112	33	20	75	63	100	48	165	210	160	270	200	15,4	077000100
125	PVA 125 H2	80	170	80	140	39	26	95	80	125	57	200	250	210	320	320	30,0	077000125

#### Napomene:

2) = Pripadajući svornjak  $\varnothing r6$ ; (svornjak i pločica osiguranja se isporučuju standardno s vilicom)

4) $m$  = Masa vilice