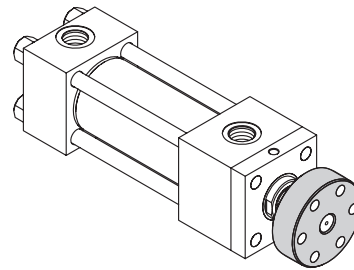


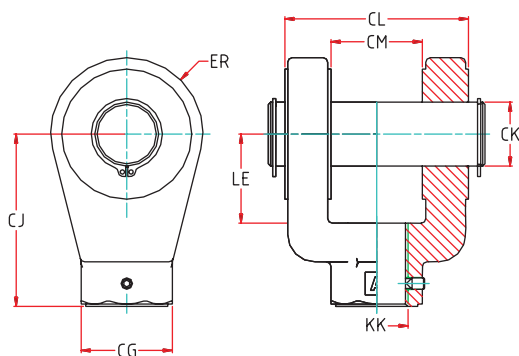
## Round flange

ISO 8132



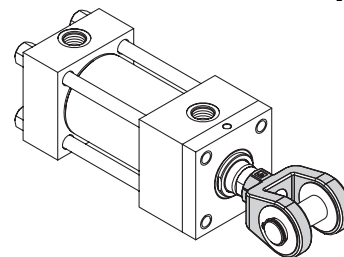
Rod		Type	KK (Metric)	B1	B2	C $\phi$	K $\phi$	R x N° $\phi$ Q.ty	R2 $\phi$	Ordering code
14	B	OKPR 25	M12x1,25	17	6,8	56	40	6,6 4	11	0205031000025
18	D	OKPR 32	M 14x1,5	19	9	63	45	9 4	14,5	0205031000032
22	F	OKPR 40	M16x1,5	23	9	72	54	9 6	14,5	0205031000040
28	H	OKPR 50	M20x1,5	29	9	82	63	9 6	14,5	0205031000050
36	L	OKPR 63	M27x2	37	11	100	78	11 6	17,5	0205031000063
45	M	OKPR 80	M33x2	46	13	120	95	13,5 8	20	0205031000080
56	P	OKPR 100	M42x2	57	17,5	150	120	17,5 8	26	0205031000100
70	R	OKPR 125	M48x2	64	21,5	190	150	22 8	33	0205031000125
90	T	OKPR 160	M64x3	86	25	230	180	26 8	40	0205031000160

Unless otherwise specified, all dimensions are given in millimetres.



## Fork joint hinge with pin

ISO 8133



Rod		Type	KK (Metric)	CK <sup>fb</sup> $\phi$	CL <sub>max</sub>	CM <sup>b12</sup>	CJ <sup>js13</sup>	LE <sub>min</sub>	ER <sub>max</sub>	CG	Ordering code
12	A	VSS 10	M10x1,25	10	24	12	32	13	12	19	0205007000010
14	B	VSS 12	M12x1,25	12	32	16	36	19	17	21	0205007000012
18	D	VSS 14	M 14x1,5	14	40	20	38	19	17	21	0205007000014
22	F	VSS 16	M16x1,5	20	60	30	54	32	29	32	0205007000016
28	H	VSS 20	M20x1,5	20	60	30	60	32	29	32	0205007000020
36	L	VSS 27	M27x2	28	80	40	75	39	34	40	0205007000027
45	M	VSS 33	M33x2	36	100	50	99	54	50	56	0205007000033
56	P	VSS 42	M42x2	45	120	60	113	57	53	56	0205007000042
70	R	VSS 48	M48x2	56	140	70	126	63	59	75	0205007000048
90	T	VSS 64	M64x3	70	160	80	168	83	78	95	0205007000064
110	V	VSS 80	M80x3	70	160	80	168	83	78	95	0205007000080
140	Z	VSS 100	M100x3	100	230	100	250	90	95	160	0205007000100

Unless otherwise specified, all dimensions are given in millimetres.