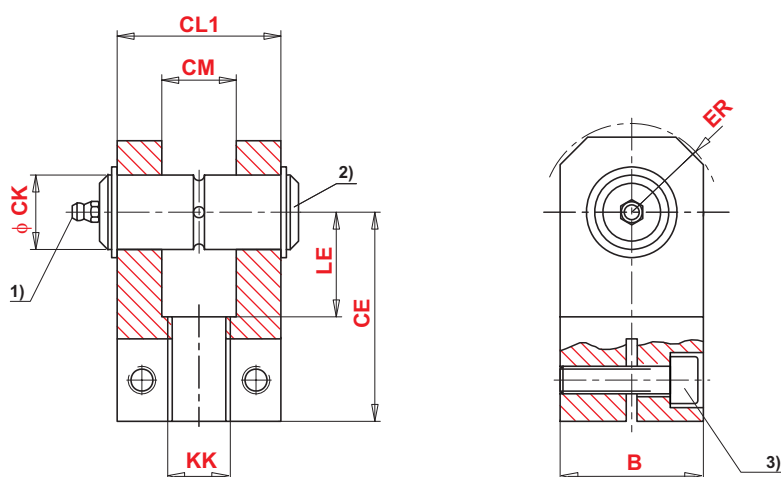
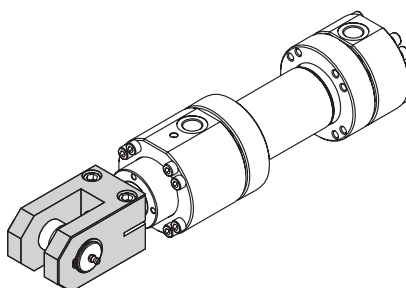


## Fork clevis

ISO 8132



### Remarks:

- 1) = Grease nipple; cone head form A to DIN 71412
- 2) = Associated pin  $\varnothing r6$
- 3)  $M_p$  = Tightening moment  
The fork clevis must always be screwed against the shoulder of the piston rod. Then, the clamping screws must be tightened to the specified tightening torque.
- 4)  $m$  = Weight of fork clevis

Type	CK	CE	B	CL1	CM	ER	KK	LE	Rated Force	$m^4)$	Ordering code
	H9	js12	max	h16	A12	max	(Metric)	min			
	mm								kN	Kg	
VSS 10	10	37	20	24	10	11	M10x1,25	18	5	0,10	055000010
VSS 12	12	38	25	28	12	16	M12x1,25	18	8	0,16	055000012
VSS 14	16	44	30	36	16	20	M14x1,5	22	12,5	0,27	055000014
VSS 16	20	52	40	45	20	25	M16x1,5	27	20	0,53	055000016
VSS 20	25	65	50	56	25	32	M20x1,5	34	32	1,12	055000020
VSS 27	32	80	65	70	32	40	M27x2	42	50	4,70	055000027
VSS 33	40	97	80	90	40	50	M33x2	52	80	7,80	055000033
VSS 42	50	120	100	110	50	63	M42x2	64	125	14,10	055000042
VSS 48	63	140	125	140	63	71	M48x2	75	200	23,40	055000048
VSS 64	80	180	160	170	80	90	M64x3	94	320	53,10	055000064