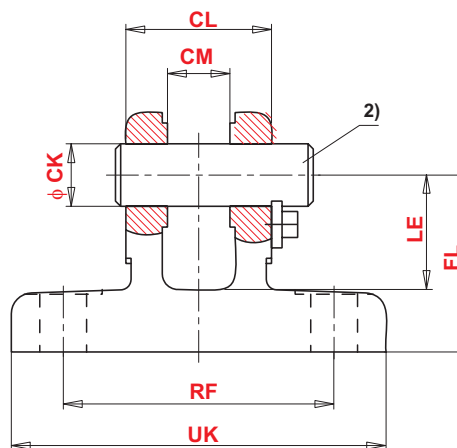
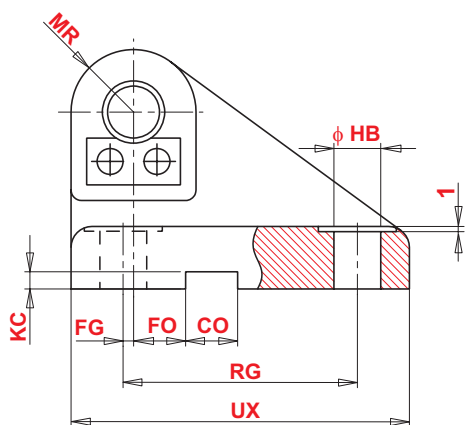
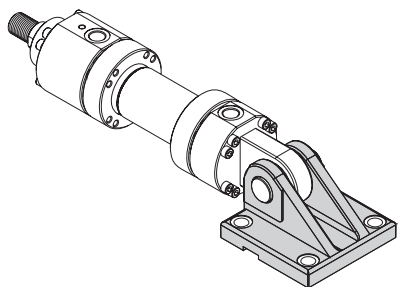




# Clevis bracket

## Form B

ISO 8132



Bore Ø	Type	CK	CL	CM	CO	FG	FL	FO	HB	KC	LE	MR	RF	RG	UK	UX	Rated Force	m <sup>4)</sup>	Ordering code
		H9	h16	A12	N9	js14	js12	js14	H13	+0,3	min	max	js14	js14	max	max			
mm		mm																	
25	PVB 12	12	28	12	10	2	34	10	9	3,3	22	12	52	45	72	65	8	0,55	066000012
32	PVB 16	16	36	16	16	3,5	40	10	11	4,3	27	16	65	55	90	80	12,5	0,90	066000016
40	PVB 20	20	45	20	16	7,5	45	10	11	4,3	30	20	75	70	100	95	20	1,50	066000020
50	PVB 25	25	56	25	25	10	55	10	13,5	5,4	37	25	90	85	120	115	32	2,70	066000025
63	PVB 32	32	70	32	25	14,5	65	6	17,5	5,4	43	32	110	110	145	145	50	4,50	066000032
80	PVB 40	40	90	40	36	17,5	76	6	22	8,4	52	40	140	125	185	170	80	8,50	066000040
100	PVB 50	50	110	50	36	25	95	0	26	8,4	65	50	165	150	215	200	125	13,50	066000050
125	PVB 63	63	140	63	50	33	112	0	33	11,4	75	63	210	170	270	230	200	23,40	066000063
160	PVB 80	80	170	80	50	45	140	0	39	11,4	95	80	250	210	320	280	320	38,50	066000080

**Remarks:**

2) = Associated pin Ø m6 (the pin and pin retention are included within the scope of supply)

4)<sub>m</sub> = Weight of the fork type mounting block