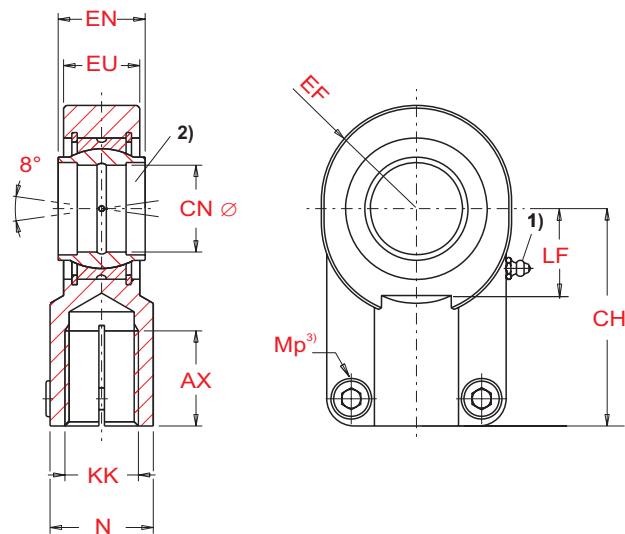
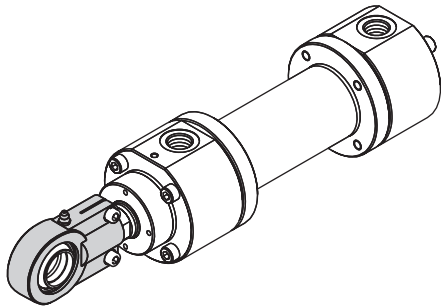


Self-aligning clevis

ISO 6982 / DIN 24338



Bore Ø	MM Ø	Type	CN H7	N Ø	EF js13	CH min.	AX h12	EN max	EU max	KK	LF	Mp ³⁾	LOAD FACTORS		SCREW DIN 912	m ⁴⁾	Ordering code
													Dynamic C	Static Co			
mm		mm										Nm	kN		Kg		
25	14	ZGL 12 M1	12	19	16,5	38	17	12	11	M12x1,25	13	6	10,8	24,5	M5x16	0,11	205004000012
25	18	ZGL 16 M1	16	22	20,5	44	19	16	14	M14x1,5	16,5	10	17,6	36,5	M6x14	0,20	205004000016
32		ZGL 20 M1	20	28	25	52	23	20	17,5	M16x1,5	20,5	25	30	48	M8x20	0,35	205004000020
40	28	ZGL 25 M1	25	31	32	65	29	25	22	M20x1,5	25,5	25	48	78	M8x20	0,62	205004000025
50		ZGL 32 M1	32	38	40	80	37	32	28	M27x2	30	49	67	114	M10x25	1,15	205004000032
63	45	ZGL 40 M1	40	47	50	97	46	40	34	M33x2	39	49	100	204	M10x30	2,18	205004000040
80		ZGL 50 M1	50	58	63	120	57	50	42	M42x2	47	86	156	310	M12x35	3,96	205004000050
100	70	ZGL 63 M1	63	70	72,5	140	64	63	53,5	M48x2	58	210	255	430	M16x40	6,80	205004000063
125		ZGL 80 M1	80	91	92	180	86	80	68	M64x3	74	410	400	695	M20x50	13,00	205004000080
160	110	ZGL 100 M1	100	110	114	210	96	100	85,5	M80x3	94	710	610	1060	M24x60	25,00	205004000100
200		ZGL 125 M1	125	135	160	260	113	125	105	M100x3	116	710	950	1430	M24x70	46,00	205004000125

Remarks:

- 1) = Grease nipple, tapered head, form A to DIN 71412
- 2) = Associated pin \varnothing m6
- 3) Mp = Tightening torque
The self-aligning clevis must always be screwed against the shoulder of the piston rod. Then, the clamping screws must be tightened to the specified tightening torque.
- 4) m = Weight of self-aligning clevis

The installation dimensions may slightly vary depending on the manufacturer.