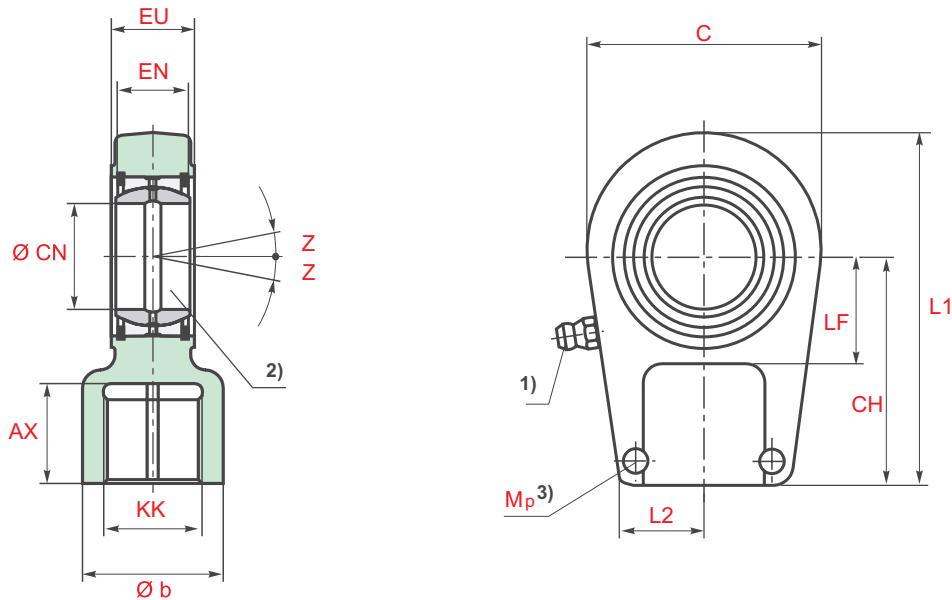


CGAK TAPR...U

Self aligning clevis



Piston Ø	Type	AX	b	C	CH	CN	EN	EU -0,4	KK	L1	L2	LF	Mp ³⁾ Nm	Z	m ⁴⁾ kg
40	CGAK 16	17	28	56	50	25 _{0,010}	20 _{0,12}	23	M16x1,5	80	23	28	9	7°	0,47
50	CGAK 22	23	30	64	60	30 _{0,010}	22 _{0,12}	28	M22x1,5	94	25	30	20	6°	0,77
63	CGAK 28	29	38	78	70	35 _{0,012}	25 _{0,12}	30	M28x1,5	112	33	38	20	6°	1,24
80	CGAK 35	36	45	94	85	40 _{0,012}	28 _{0,12}	35	M35x1,5	135	38	45	40	7°	2,12
100	CGAK 45	46	61	116	105	50 _{0,012}	35 _{0,12}	40	M45x1,5	168	45	55	80	6°	3,74
125	CGAK 58	59	75	130	130	60 _{0,015}	44 _{0,15}	50	M58x1,5	200	60	65	160	6°	6,49
140	CGAK 65	66	86	154	150	70 _{0,015}	49 _{0,15}	55	M65x1,5	232	65	75	160	6°	9,88
160	CGAK 80	81	105	176	170	80 _{0,015}	55 _{0,15}	60	M80x2	265	80	80	160	6°	14,20
180	CGAK 100	101	124	206	210	90 _{0,020}	60 _{0,20}	65	M100x2	322	90	90	160	5°	20,00
200	CGAK 110	111	138	231	235	100 _{0,020}	70 _{0,20}	70	M110x2	360	100	105	300	7°	27,50
220	CGAK 120	125	152	266	265	110 _{0,020}	70 _{0,20}	80	M120x3	407,5	110	115	500	6°	45,60
250	CGAK 120	125	152	266	265	110 _{0,020}	70 _{0,20}	80	M120x3	407,5	110	115	500	6°	45,60
280	CGAK 130	135	172	340	310	120 _{0,020}	85 _{0,20}	90	M130x3	490	138	140	500	6°	72,00

* Unless otherwise specified, all dimensions are given in millimetres.

Remarks:

- 1) = Grease nipple; cone head form A to DIN 71412
- 2) = Associated pin Ø m6;
associated pin Ø j6 with a maintenance-free self-aligning clevis
- 3) Mp = Tightening moment
The fork clevis must always be screwed against the shoulder of the piston rod.
Then, the clamping screws must be tightened to the specified tightening torque.
- 4) m = Weight of self-aligning clevis