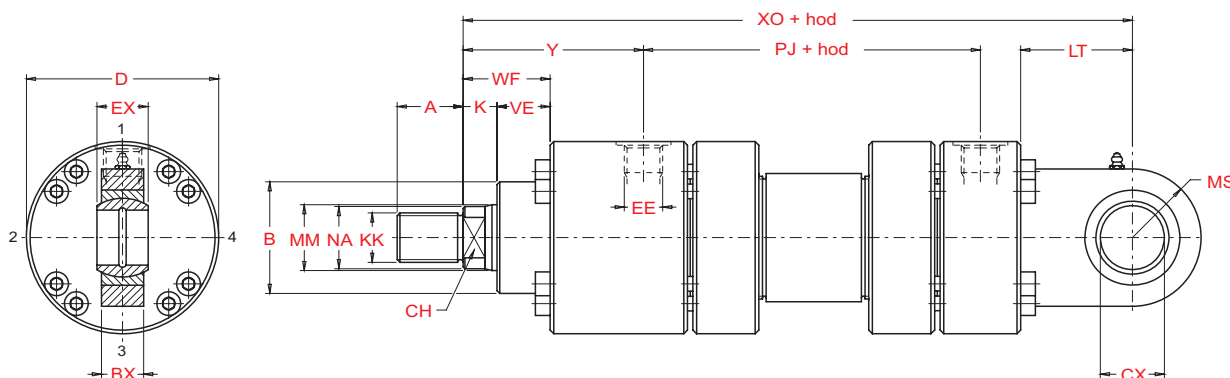
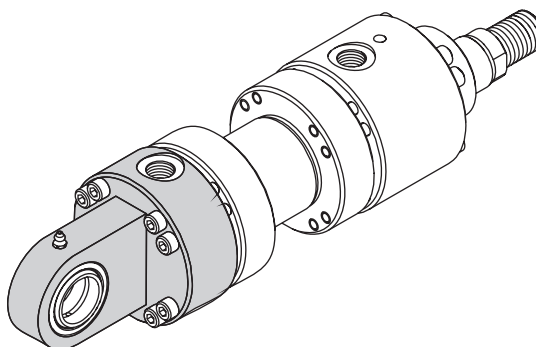


Ušica straga sa zglobnim ležajem

MP5

Tip 08



MM - promjer klipnjače

Klip Ø	MM Ø	A	B ⁸ Ø	CH	D _{max} Ø	EE (BSP)	KK (Metric)	NA Ø	K	VE	WF	BX	CX ^{H9} Ø	EX ^{H12}	LT	MS _{max}	XO	Y	PJ
50	32	36	63	28	105	1/2"	M27x2	31	18	29	47	27	32	32	61	35	305	98	120
	36			35															
63	40	45	75	34	122	3/4"	M33x2	38	21	32	53	35	40	40	74	50	348	112	133
	45			43															
80	50	56	90	43	145	3/4"	M42x2	48	24	36	60	40	50	50	90	61,5	395	120	155
	56			54															
100	63	63	110	53	175	1"	M48x2	60	27	41	68	50	63	63	102	72,5	442	134	171
	70			67															
125	80	85	132	65	210	1"	M64x3	77	31	45	76	60	80	80	124	90	520	153	205
	90			87															
140 ⁵⁾	90	90	145	75	255	1" 1/4	M72x3	87	31	45	76	65	90	90	150	113	580	181	208
	100			96															
160	100	95	160	85	270	1" 1/4	M80x3	96	35	50	85	70	100	100	150	125	617	185	235
	110			106															
180 ⁵⁾	110	105	185	95	315	1" 1/4	M90x3	106	40	55	95	80	110	110	185	147,5	690	205	250
	125			121															
200	125	112	200	-	330	1" 1/4	M100x3	121	40	61	101	102	125	125	206	160	756	220	278
	140			136															
250	160	125	250	-	410	1" 1/2	M125x4	155	42	71	113	130	160	160	251	200	903	260	325
	180			175															
320	200	160	320	-	510	2"	M160x4	195	48	88	136	162	200	200	316	250	1080	310	350
	220			214															
400	250	200	400	-	628	2"	M200x4	242	53	110	163	192	250	250	300	320	1075	310	355
	280			270															

5) Promjer klipa nije prema standardu ISO 6022

Ako nije drugačije naznačeno sve dimenzije su u milimetrima.

