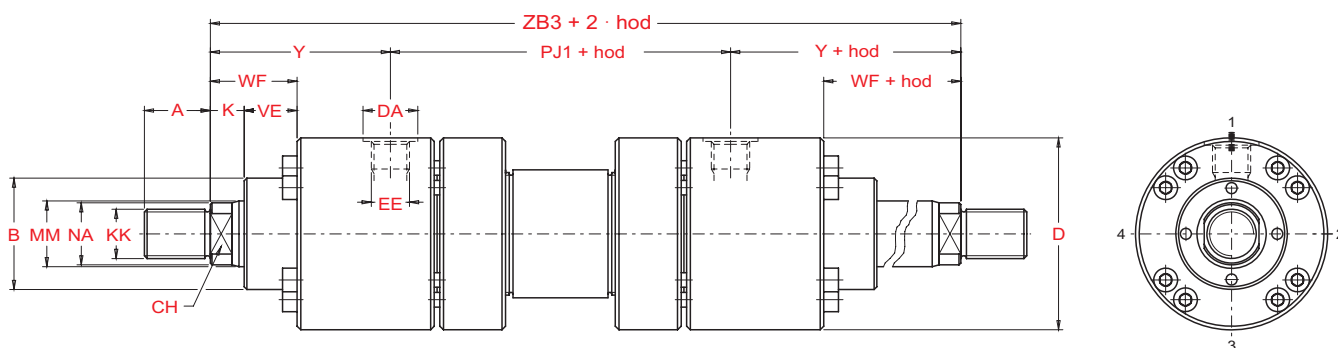


## Bazna verzija - dvostrana klipnjača - Tip 00



MM - oznaka za promjer klipnjače

Klip Ø	MM Ø	A	B <sup>R</sup> Ø	CH	D <sub>max</sub> Ø	EE (BSP)	DA Ø	KK (Metric)	NA Ø	K	VE	WF	Y	PJ1	ZB3
50	32	36	63	28	105	1/2"	30	M27x2	31	18	29	47	98	126	322
	36			35											
63	40	45	75	34	122	3/4"	37	M33x2	38	21	32	53	112	134	358
	45			43											
80	50	56	90	43	145	3/4"	37	M42x2	48	24	36	60	120	153	393
	56			54											
100	63	63	110	53	175	1"	47	M48x2	60	27	41	68	134	165	433
	70			67											
125	80	85	132	65	210	1"	47	M64x3	77	31	45	76	153	204	510
	90			87											
140 <sup>1</sup>	90	90	145	75	255	1" 1/4	54	M72x3	87	31	45	76	181	208	570
	100			96											
160	100	95	160	85	270	1" 1/4	54	M80x3	96	35	50	85	185	225	595
	110			106											
180 <sup>1</sup>	110	105	185	95	315	1" 1/4	54	M90x3	106	40	55	95	205	250	660
	125			121											
200	125	112	200	-	330	1" 1/4	54	M100x3	121	40	61	101	220	271	711
	140			136											
250	160	125	250	-	410	1" 1/2	61	M125x4	155	42	71	113	260	308	828
	180			175											
320	200	160	320	-	510	2"	75	M160x4	195	48	88	136	310	350	970
	220			214											
400	250	200	400	-	628	2"	75	M200x4	242	53	110	163	310	355	975
	280			270											

! Promjeri koji nisu prema standardu ISO 6022

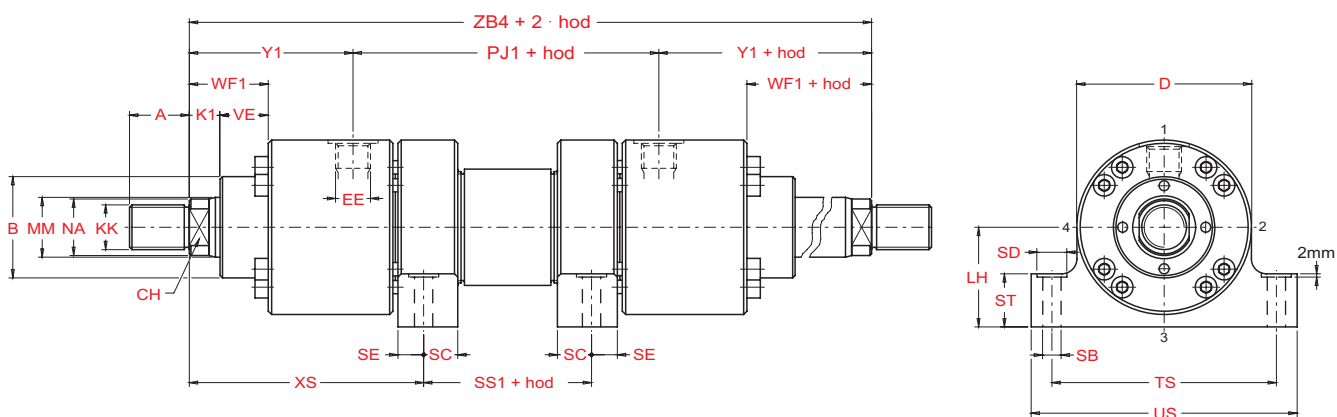
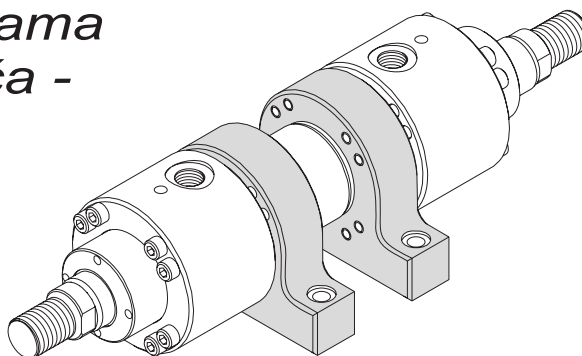
Ako drugačije nije navedeno sve dimenzije su u milimetrima.



## Pričvršćenja na stopama - dvostrana klipnjača -

### Tip 03

(pričvršćenje nije prema standardu ISO)



MM - oznaka za promjer klipnjače

Klip Ø	MM Ø	A	B <sup>FB</sup> Ø	CH	D <sub>max</sub> Ø	EE (BSP)	KK (Metric)	NA Ø	K1	VE	WF1	LH <sup>H10</sup>	SB <sup>H13</sup> Ø	SD Ø	SC	SE	ST	TS	US	XS	Y1	SS1	PJ1	ZB4
50	32	36	63	28	105	1/2"	M27x2	31	18	29	47	60	11	18	20,5*	16	32	135	160	130	98	62	126	322
	36			35																				
63	40	45	75	34	122	3/4"	M33x2	38	19	32	51	68	13,5	20	24,5*	18	37	155	185	148	110	59	134	354
	45			43																				
80	50	56	90	43	145	3/4"	M42x2	48	24	36	60	80	17,5	26	22,5	23	42	185	225	171	120	53	153	393
	56			54																				
100	63	70	110	53	175	1"	M48x2	60	27	41	68	95	22	33	27,5	28	52	220	265	193	134	48	165	433
	70			67																				
125	80	90	132	65	210	1"	M64x3	77	31	45	76	115	26	40	30	30	62	270	325	230	153	50	204	510
	90			87																				
140 <sup>1</sup>	90	100	145	75	255	1" 1/4	M72x3	87	31	45	76	135	30	48	35,5	36	77	325	390	255	181	61	208	570
	100			96																				
160	100	110	160	85	270	1" 1/4	M80x3	96	38	50	88	145	33	48	37,5	38	77	340	405	266	188	70	225	601
	110			106																				
180 <sup>1</sup>	110	125	185	95	315	1" 1/4	M90x3	106	40	55	95	165	40	60	42,5	43	87	390	465	288	205	85	250	660
	125			121																				
200	125	140	200	-	330	1" 1/4	M100x3	121	40	61	101	170	40	60	47*	45	87	405	480	315	220	81	271	711
	140			136																				
250	160	180	250	-	410	1" 1/2	M125x4	155	48	71	119	215	52	76	52*	50	112	520	620	360	266	120	308	840
	180			175																				
320	200	220	320	-	510	2"	M160x4	195	48	88	136	260	62	110	62*	60	152	620	740	425	310	120	350	970
	220			214																				
400	250	280	400	-	628	2"	M200x4	242	53	110	163	320	80	120	75	75	170	760	900	455	310	91	355	975
	280			270																				

! Promjeri koji nisu prema standardu ISO 6022

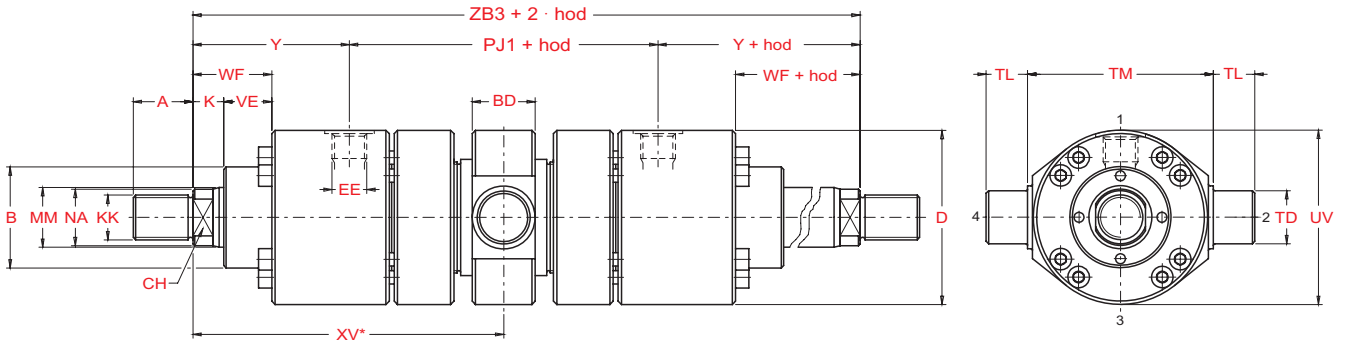
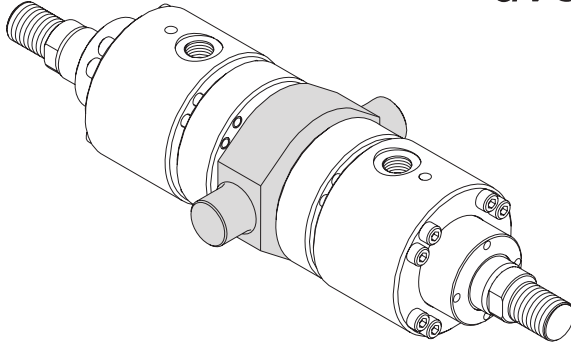
\* Rupe za pričvršćenje nisu u sredini pričvršne stope.

Ako drugačije nije navedeno sve dimenzije su u milimetrima.

## Njihajuće centralno pričvršćenje - dvostrana klipnjača -

### Tip 06

(ISO MT4)



MM - oznaka za promjer klipnjače

Klip Ø	MM Ø	A	B <sup>18</sup> Ø	CH	D <sub>max</sub> Ø	EE (BSP)	KK (Metric)	NA Ø	K	VE	WF	BD	TD <sup>18</sup> Ø	TL	TM <sup>h13</sup>	UV Ø	XV min.	XV + hod max.	Y	PJ1	ZB3	hod min.
50	32	36	63	28	105	1/2"	M27x2	31	18	29	47	38	32	25	112	105	180	144	98	126	322	45
	36		35																			
63	40	45	75	34	122	3/4"	M33x2	38	21	32	53	48	40	32	125	122	195	160	112	134	358	45
	45		43																			
80	50	56	90	43	145	3/4"	M42x2	48	24	36	60	58	50	40	150	145	220	175	120	153	393	60
	56		54																			
100	63	70	110	53	175	1"	M48x2	60	27	41	68	73	63	50	180	175	245	185	134	165	433	80
	70		67																			
125	80	90	132	65	210	1"	M64x3	77	31	45	76	88	80	63	224	210	290	220	153	204	510	95
	90		87																			
140 <sup>1</sup>	90	100	145	75	255	1" 1/4	M72x3	87	31	45	76	98	90	70	265	255	330	240	181	208	570	115
	100		96																			
160	100	110	160	85	270	1" 1/4	M80x3	96	35	50	85	108	100	80	280	270	340	255	185	225	595	115
	110		106																			
180 <sup>1</sup>	110	125	185	95	315	1" 1/4	M90x3	106	40	55	95	118	110	90	320	315	390	270	205	250	660	150
	125		121																			
200	125	140	200	-	330	1" 1/4	M100x3	121	40	61	101	133	125	100	335	330	430	280	220	271	711	180
	140		136																			
250	160	180	250	-	410	1" 1/2	M125x4	155	42	71	113	180	160	125	425	410	505	320	260	308	828	220
	180		175																			
320	200	220	320	-	510	2"	M160x4	195	48	88	136	220	200	160	530	510	590	380	310	350	970	260
	220		214																			
400	250	280	400	-	628	2"	M200x4	242	53	110	163	270	250	200	630	628	630	340	310	355	975	340
	280		270																			

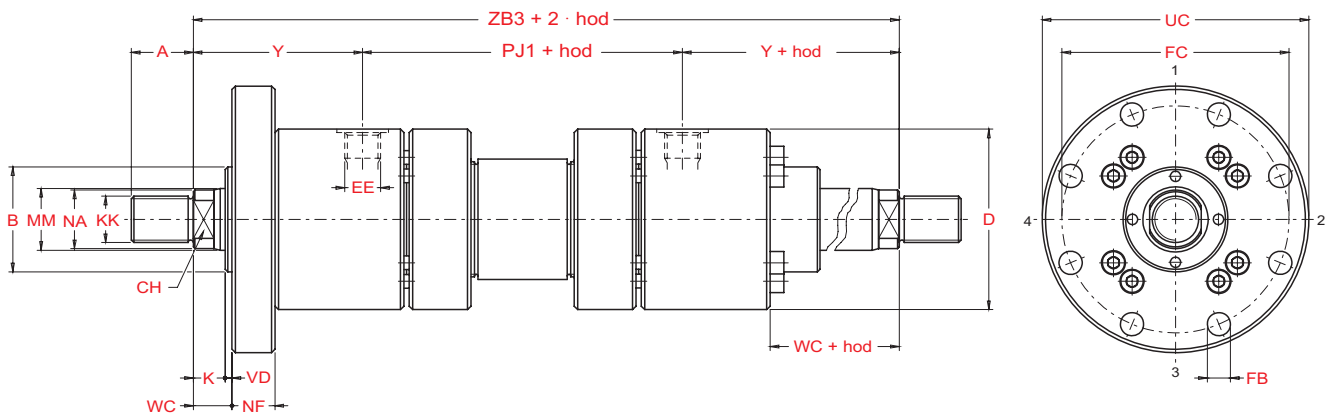
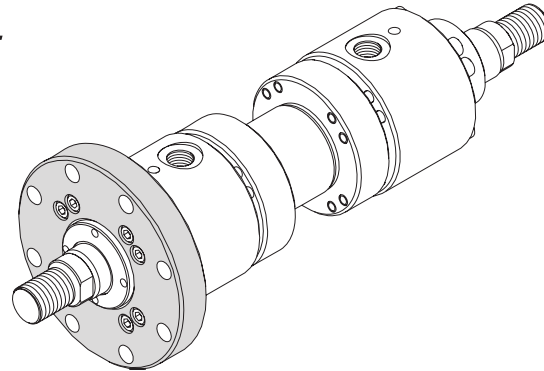
<sup>1</sup> Promjeri koji nisu prema standardu ISO 6022

\* Specificirati kotu prilikom naručivanja.

Ako drugačije nije navedeno sve dimenzije su u milimetrima.

### Prirubnica sprijeda - dvostrana klipnjača -

## Tip 13 (ISO MF3)



MM - oznaka za promjer klipnjače

Klip Ø	MM Ø	A	B <sup>8</sup> Ø	CH	D <sub>max</sub> Ø	EE (BSP)	KK (Metric)	NA Ø	K	VD	WC	NF	FB Ø	FC Ø	UC Ø	Y	PJ1	ZB3
50	32	36	63	28	105	1/2"	M27x2	31	18	4	22	25	13,5 N° 8 fori	132	155	98	126	322
	36			35														
63	40	45	75	34	122	3/4"	M33x2	38	21	4	25	28	13,5 N° 8 fori	150	175	112	134	358
	45			43														
80	50	56	90	43	145	3/4"	M42x2	48	24	4	28	32	17,5 N° 8 fori	180	210	120	153	393
	56			54														
100	63	63	110	53	175	1"	M48x2	60	27	5	32	36	22 N° 8 fori	212	250	134	165	433
	70			67														
125	80	85	132	65	210	1"	M64x3	77	31	5	36	40	22 N° 8 fori	250	290	153	204	510
	90			87														
140 <sup>1</sup>	90	145	145	75	255	1" 1/4	M72x3	87	31	5	36	40	26 N° 8 fori	300	340	181	208	570
	100			96														
160	100	95	160	85	270	1" 1/4	M80x3	96	35	5	40	45	26 N° 8 fori	315	360	185	225	595
	110			106														
180 <sup>1</sup>	110	105	185	95	315	1" 1/4	M90x3	106	40	5	45	50	33 N° 8 fori	365	420	205	250	660
	125			121														
200	125	112	200	-	330	1" 1/4	M100x3	121	40	5	45	56	33 N° 8 fori	385	440	220	271	711
	140			136														
250	160	125	250	-	410	1" 1/2	M125x4	155	42	8	50	63	39 N° 8 fori	475	540	260	308	828
	180			175														
320	200	160	320	-	510	2"	M160x4	195	48	8	56	80	45 N° 8 fori	600	675	310	350	970
	220			214														
400	250	200	400	-	628	2"	M200x4	242	53	10	63	100	45 N°12 fori	720	800	310	355	975
	280			270														

<sup>1</sup> Promjeri koji nisu prema standardu ISO 6022

Ako drugačije nije navedeno sve dimenzije su u milimetrima.

