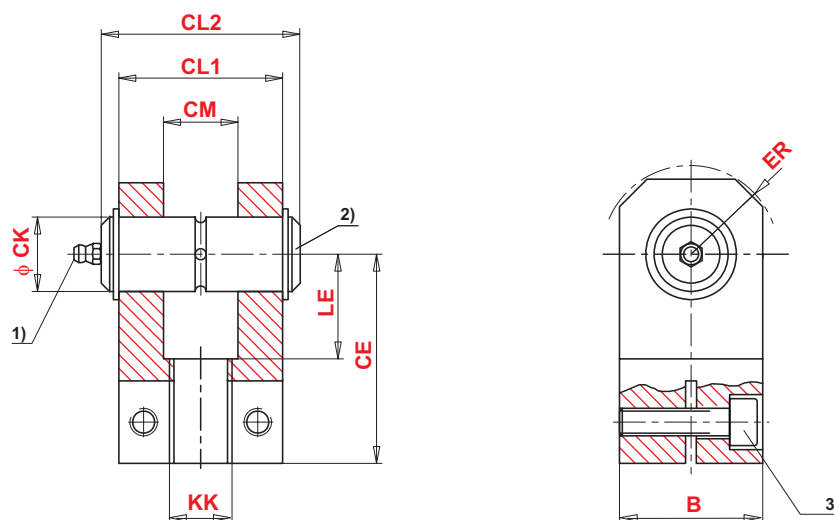
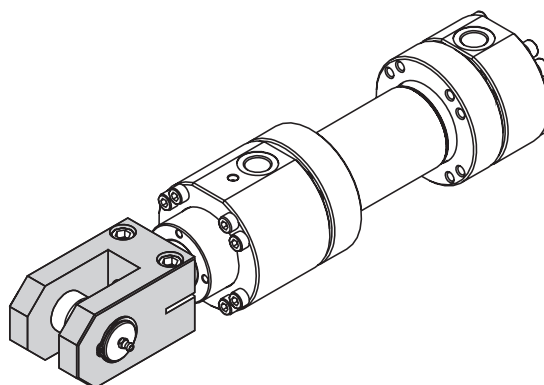


Fork clevis

ISO 8132



| Bore Ø | MM Ø | Type | CK | CE | B | CL1 | CL2 | CM | ER | KK | LE | Mp ³⁾ | RATED VALUE | | m ⁴⁾ | Ordering code |
|-----------|---------|-----------|----|------|-----|-----|-----|-----|----------|-------|----|------------------|-------------|------|-----------------|---------------|
| | | | H9 | js12 | max | h16 | A12 | max | (Metric) | min | Nm | kN | Kg | | | |
| 50 | 32 | VSS 27 H2 | 32 | 80 | 65 | 70 | 78 | 32 | 40 | M27x2 | 42 | 57 | 50 | 4,7 | 055000027 | |
| | 36 | | | | | | | | | | | | | | | |
| 63 | 40 | VSS 33 H2 | 40 | 97 | 80 | 90 | 98 | 40 | 50 | M33x2 | 52 | 99 | 80 | 7,8 | 055000033 | |
| | 45 | | | | | | | | | | | | | | | |
| 80 | 50 | VSS 42 H2 | 50 | 120 | 100 | 110 | 118 | 50 | 63 | M42x2 | 64 | 99 | 125 | 14,1 | 055000042 | |
| | 56 | | | | | | | | | | | | | | | |
| 100 | 63 | VSS 48 H2 | 63 | 140 | 125 | 140 | 150 | 63 | 71 | M48x2 | 75 | 157 | 200 | 23,4 | 055000048 | |
| | 70 | | | | | | | | | | | | | | | |
| 125 | 80 | VSS 64 H2 | 80 | 180 | 160 | 170 | 180 | 80 | 90 | M64x3 | 94 | 240 | 320 | 53,1 | 055000064 | |
| | 90 | | | | | | | | | | | | | | | |

Remarks:

- 1) = Grease nipple; cone head form A to DIN 71412
- 2) = Associated pin $\varnothing r6$
- 3) Mp = Tightening moment
The fork clevis must always be screwed against the shoulder of the piston rod.
Then, the clamping screws must be tightened to the specified tightening torque.
- 4) m = Weight of fork clevis