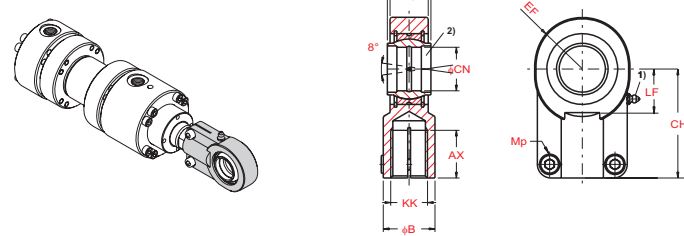
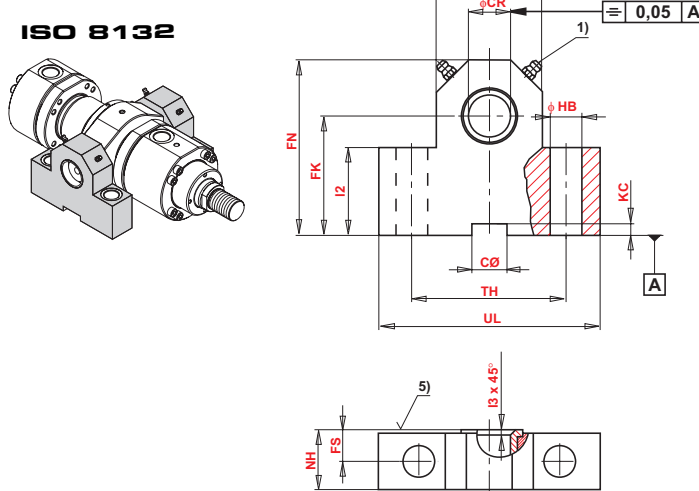


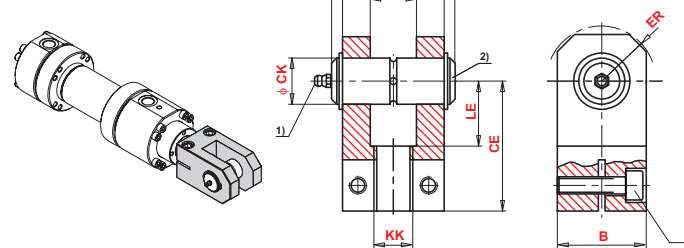
Zglobna glava
Rod eye with spherical bearing
Gelenkkopf
ISO 6982 / DIN 24338



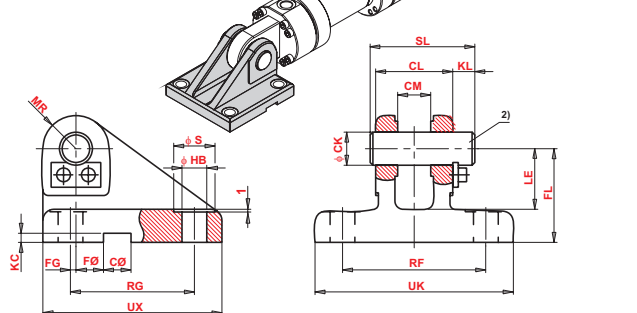
Blok oslonci za njihajuće cilindre
Trunnion mounting block
ISO 8132



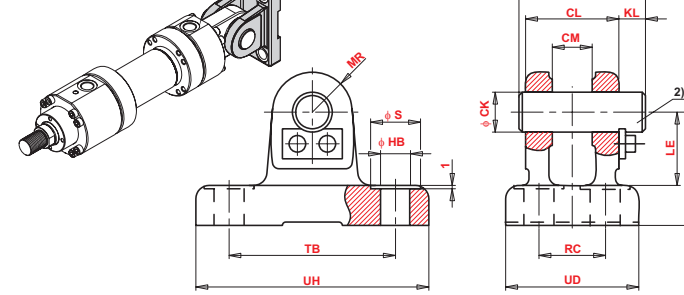
Vilica
Fork clevis
ISO 8132



Prirubna vilica - forma B
Fork type mounting block - form B
ISO 8132

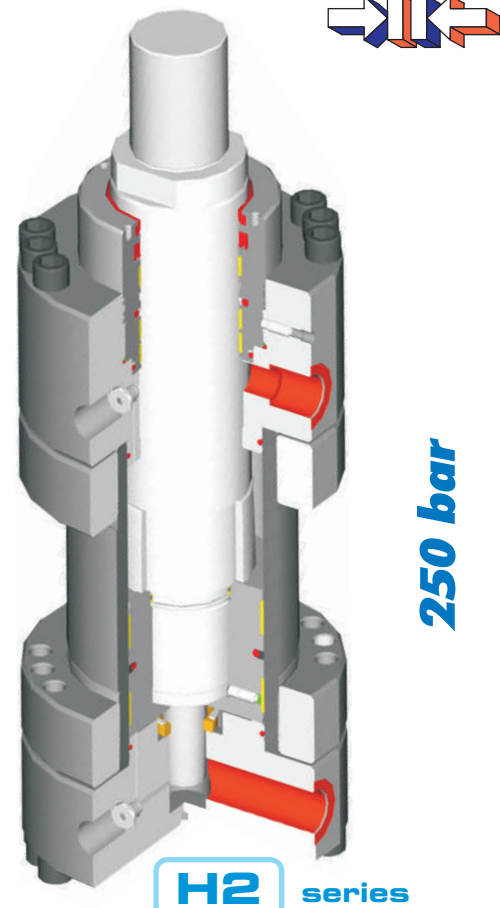


Blok oslonci za njihajuće cilindre - forma A
Prirubna vilica - forma A
ISO 8132



**CETOP RP 73 H
DIN 24 333
VW 39 D 921**

ISO 6022



250 bar

HYDROMAT INŽENJERING d.o.o.

Horvatsko 72 , 42240 Ivanec , CROATIA
tel. +385 42 781 528 , 781 357 // fax. +385 42 782 338
e-mail : hydromat@hydromat.hr

www.hydromat.hr

HYDRAULIC CYLINDERS

ISO 6022

**CETOP RP 73 H
DIN 24 333
VW 39 D 921**



250 bar

H2 series

Cilindri namjenjeni za najteže radne uvjete, jednostavno održavanje i zamjena dijelova zahvaljujući modularnoj gradnji.

Cylinder for hardest conditions, easily servicing and part changing due to modular system

Zylinder für shwerigste Bedingung, einfache servisierung und Teilen wechseln bedankt modular system

6 tipova pričvršćenja

6 types of mounting

6 Befestigungsarten

Promjeri klipova - 50 do 400 mm

Piston dia. - 50 to 400 mm

Kolben dia. - 50 bis 400 mm

Promjeri klipnjača - 32 do 280 mm

Piston rod dia. - 32 to 280 mm

Kolbenstangen dia. - 32 bis 280 mm

Nazivni pritisak - 250 bar

Nominal pressure - 250 bar

Nennndruck - 250 bar

Statički ispitni pritisak - 375 bar

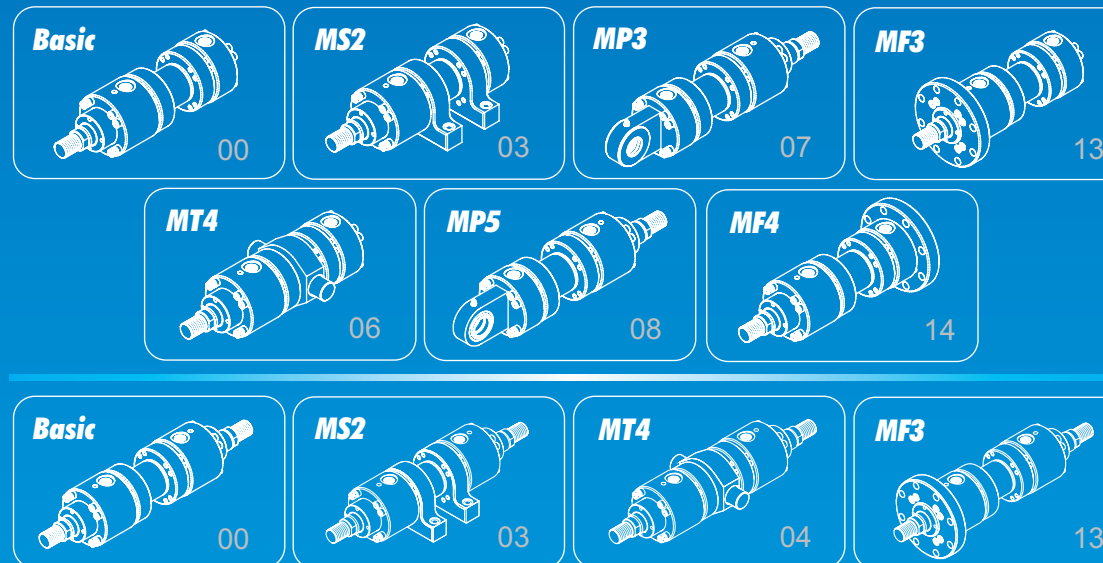
Static test pressure - 375 bar

Statischer Prüfdruck - 375 bar

Samo-podešavajuća krajnja prigušenja

Self-regulating end position cushioning

Selbseinstellende Endlagendämpfung





Bazna verzija
Basic version
Grund version

Base
Code 00

Prirubnica straga
Flange at cylinder cap
Rechteckflansch am Boden

ISO type MF4
Code I4

Ušica sa zglobnim ležajem
Swivel clevis mount
Gelenkaue am Boden

ISO type MP5
Code 08

Njihajuće pričvršćenje centralno
Centre trunnion mounting
Schwenkzapfen in Mitte

ISO type MT4
Code 06

Pričvršćenje na stopama
Foot mounting
Fussbefestigung

none ISO type
Code 03

Prirubnica sprijeda
Flange at cylinder head
Rechteckflansch am Kopf

ISO type MF3
Code IB

Ušica straga s fiksnim ležajem
Rear clevis fix
Schwenkauge am Boden

ISO type MP3
Code 07

Bazna verzija - dvostrana klipnjača
Basic version - double piston rod
Grund version - doppel k'stange

Base
Code 00

Klip Piston Kolben	Klipnjača Piston rod K'stange MM	A	B ¹⁸	CH	D _{max}	EE (BSP)	KK (Metric)	NA	DA	K	VE	WF	BX	VD	WC	NF	FB	FC	UC	CX ^{H9}	EX ^{H12}	LT	MS _{ax}	XØ	CD ^{H9}	EW ^{H12}	L	MR _{ax}
50	32	36	63	28	105	1/2"	M27x2	31	30	18	29	47	27	4	22	25	13,5 N° 8	132	155	32	32	61	35	305	32	32	61	35
	36							35																				
63	40	45	75	34	122	3/4"	M33x2	38	37	21	32	53	35	4	25	28	13,5 N° 8	150	175	40	40	74	50	348	40	40	74	50
	45							43																				
80	50	56	90	43	145	3/4"	M42x2	48	37	24	36	60	40	4	28	32	17,5 N° 8	180	210	50	50	90	61,5	395	50	50	90	61,5
	56							54																				
100	63	70	110	53	175	1"	M48x2	60	47	27	41	68	50	5	32	36	22 N° 8	212	250	63	63	102	72,5	442	63	63	102	72,5
	70							67																				
125	80	90	132	65	210	1"	M64x3	77	47	31	45	76	60	5	36	40	22 N° 8	250	290	80	80	124	90	520	80	80	124	90
	90							87																				
140 ¹	90	100	145	75	255	1" 1/4	M72x3	87	54	31	45	76	65	5	36	40	26 N° 8	300	340	90	90	150	113	580	90	90	150	113
	100							96																				
160	100	110	160	85	270	1" 1/4	M80x3	96	54	35	50	85	70	5	40	45	26 N° 8	315	360	100	100	150	125	617	100	100	150	125
	110							106																				
180 ¹	110	125	180	95	315	1" 1/4	M90x3	106	54	40	55	95	80	5	45	50	33 N° 8	365	420	110	110	185	148	690	110	110	185	148
	125							121																				
200	125	140	200	-	330	1" 1/4	M100x3	121	54	40	61	101	102	5	45	56	33 N° 8	385	440	125	125	206	160	756	125	125	206	160
	140							136																				
250	160	180	250	-	410	1" 1/2	M125x4	155	61	42	71	113	130	8	50	63	39 N° 8	475	540	160	160	251	200	903	160	160	251	200
	180							175																				
320	200	220	320	-	510	2"	M160x4	195	75	48	88	136	162	8	56	80	45 N° 8	600	675	200	200	316	250	1080	200	200	316	250
	220							214																				
400	250	280	400	-	628	2"	M200x4	242	75	53	110	163	192	10	63	100	45 N° 12	720	800	250	250	300	320	1075	250	250	300	320
	280							270																				

XC	BD	TD ¹⁸	TL	TM ^{H13}	UV	XV mini.	XV + (HOD/STROKE/ HUB) max.	(HOD/STROKE/ HUB) minimum	WF1	LH ^{H10}	SB ^{H13}	SD	SC	SE	ST	TS	US	XS	Y1	SS	Y	PJ	PJ1	ZB1 _{max}	ZB3	ZB _{max}	ZP _{max}
305	38	32	25	112	105	180	144	45	47	60	11	18	20,5*	15,5	32	135	160	130	98	55	98	120	126	244	322	244	265
348	48	40	32	125	122	195	160	45	51	68	13,5	20	24,5*	17,5	37	155	185	148	110	55	112	133	134	272	358	274	298
395	58	50	40	150	145	220	175	60	60	80	17,5	26	22,5	22,5	42	185	225	171	120	55	120	155	153	305	393	305	332
442	73	63	50	180	175	245	185	80	68	95	22	33	27,5	27,5	52	220	265	193	134	55	134	171	165	340	433	340	371
520	88	80	63	224	210	290	220	95	76	115	26	40	30	30	62	270	325	230	153	60	153	205	204	396	510	396	430
580	98	90	70	265	255	330	240	115	76	135	30	48	35,5	35,5	77	325	390	255	181	61	181	208	208	430	570	430	465
617	108	100	80	280	270	340	255	115	88	145	33	48	37,5	37,5	77	340	405	266	188	79	185	235	225	470	595	467	505
690	118	110	90	320	315	390	270	150	95	165	40	60	42,5	42,5	87	390	465	288	205	85	205	250	250	505	660	505	550
756	133	125	100	335	330	430	280	180	101	170	40	60	47	45	87	405	480	315	220	90	220	278	271	550	711	550	596
903	180	160	125	425	410	505	320	220	119	215	52	76	52*	50	112	520	620	360	266	120	260	325	308	658	828	652	703
1080	220	200	160	530	510	590	380	260	136	260	62	110	62*	60	152	620	740	425	310	120	310	350	350	764	970	764	830
1075	270	250	200	630	628	630	340	340	163	320	80	120	75	75	170	760	900	455	310	91	310	355	355	775	975	775	855

Klipnjača Piston rod K'stange MM	Klip Piston Kolben
32	50
36	
40	63
45	
50	80
56	
63	100
70	
80	125
90	
90	140 ¹
100	
100	160
110	
110	180 ¹
125	
125	200
140	
160	250
180	
200	320
220	
220	400
250	
280	